

# Graffiti Resist

A Complete Anti-Graffiti Coating

WIPE-AWAY





## What makes Graffiti Resist Unique?

---

A permanent anti-graffiti coating that can be easily & simply applied to concrete, brick, stone, render & wood to give maximum, long lasting protection.

Graffiti Resist will protect against spray paint, fly poster, contamination and weathering with ease, (no harsh chemicals or removers needed), contaminants can simply be wiped-away with water.

No form of contamination will be able to bond to the treated substrate. This is a non-sacrificial coating. Once treated, the surface can be cleaned time and time again with just cold water - there is no need to re-apply the coating.

- Graffiti, fly posters & dirt simply cannot stick to the surface.
- New ground breaking technology enables extremely low dirt pickup on treated surfaces.
- Clear finish.
- Contamination & graffiti can be jet washed or wiped-away with water.
- Single pack - a simple, fast curing application, resistance begins with hours.
- Special additives allow the Graffiti Resist coating to be overcoatable with itself.
- The coating can also be used to protect existing graffiti, art and murals.

## Perfect for use on:



### Motorway Tunnels & Barriers

---

Due to the strong non-stick properties of Graffiti Resist, traffic pollution and other contaminants that are common where traffic is heavy are unable to stick to the surface, keeping it cleaner & protected for longer against graffiti, posters and spraying.

Ideal for: concrete, mortar, sandstone, limestone, plaster, granite, marble.



### Bridges & Viaducts

---

The coating is closely designed around the nature of protection required for bridges & viaducts. These areas are prone to being hard to maintain, making Graffiti Resist perfect for these hard to reach areas. Graffiti & Posters can simply be washed away with water. This is a flexible and re-coatable system.



### Residential, Apartments & Offices

---

Graffiti Resist coating is highly suitable for areas ranging from large tower blocks & office buildings to residential homes. It is an easy to handle one part system, providing invisible, yet high adhesion to mineral substrates, performing very well on Wood, Metal, Glass and Plastics with the use of an adhesion promoter.

This coating is safer to use, making it perfect for residential, industrial and commercial use.

## How to apply:

For use on mineral substrates:

1. Read all technical data before use. Ensure surface is clean, dry and dust free before application.
2. Apply using a brush or short pile/ gloss roller or airless sprayer ensuring an even coat. Avoid runs, drips and foaming - do not use a foam roller.
3. For more porous surfaces, apply a second coat immediately (maximum 30 minutes, once the first coat is dry)

For use on non-porous surfaces:

1. Apply one coat of Adhesion Promoter and allow to dry for 24 hours. See primer section.
2. Proceed to apply using the above application method.

## Surface Preparation

Always test a small inconspicuous area before use to ensure surface compatibility, performance and finish/texture is acceptable.

Ensure surface is clean, free from any contaminants including dust, dirt, oil, grease, algae and efflorescence. Any previous coatings **MUST** be fully cured before application.

Ensure all detergents have been removed. Cleaners applied on hot days leave detergent films. These can cause uneven application. To remove previous graffiti use Paramose Graffiti Remover.

## Limitations

If the surface requires decorating or repair work this must take place prior to application.

Keep pets away until surface is fully dry

Do not apply when ambient/surface temperature is below +5°C or above +25°C

Do not apply in wet weather, when rain is imminent or before surface is completely dry.

## Coverage

To prevent enhancement/ darkening of the substrate, we recommend using a non-darkening primer before application.

Coverage is dependant upon the porosity of the surface. Coverage is usually 5-10m<sup>2</sup> per litre.

For the protection of non-mineral substrates: glass, metal and plastics, an adhesion promoter is needed as a base coat for Graffiti Resist.

## Product Characteristics

Colour	Clear
Odour	Slightly Solvent
Form	Liquid
Application Temperatures	Maximum +5°C Minimum 25°C
Shelf Life	24 months from the date of manufacture in the original unopened container
Drying Time	4 hours depending on conditions
UV stability	High UV resistance
Coverage	150/250 g/m <sup>2</sup>

## Primer

Graffiti Resist used without a primer will provide enhancement to the surfaces original colour.

If enhancement is not desired use **R321** Colour Enhancement Reducer.

Adhesion promoter will be required on metal, plastic and wood surfaces, use **R322** Adhesion Promoter as required on these surfaces.



# Testing:

## Stage 1:



The concrete substrate is prepared & cleaned, ready for the application of Graffiti Resist.

Half of the substrate will be treated, leaving the other half untreated to give a good indication of adhesion performance against contaminants, showing the degree of resistance the coating will provide.

\*Existing marks are from the precast-ing process & will not affect performance

## Stage 2:



A single, even coat of Graffiti Resist is applied to the right of the clean surface with a pad. This will ensure even distribution of product for testing purposes. (Other methods of application are suitable such as roller, brush or airless spray)

## Stage 3:



The concrete is allowed to dry for 72 hours to ensure full curing before subjecting to heavy contamination.

The left hand side shows the untreated substrate, the right hand side has been treated with a single application of Graffiti Resist.

Spray paint will be applied to both sides of the concrete sample to show the level of resistance provided.

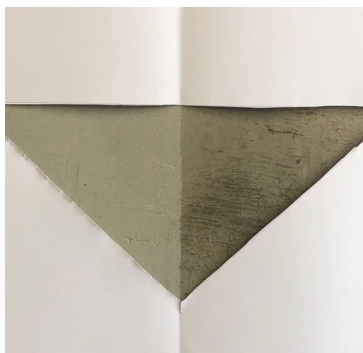
## Graffiti Resistance Test:



The treated concrete performed very well, the spray paint was wiped away with a cloth and light cleaner. Power washing will remove graffiti using just water.

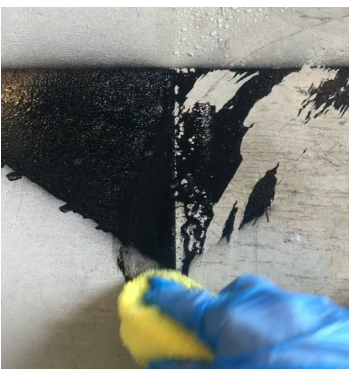
Little agitation was needed to remove the graffiti - see following page for more

# The testing & Cleaning process



The graffiti is allowed to dry and lightly agitated with a microfibre cloth and light cleaner.

A low level of agitation was required to remove the majority of the graffiti, as demonstrated in the cleaning process photos.



A generous coat of solvent based spray paint is applied to the half treated test piece.



Graffiti Resist demonstrated excellent resistance against spray paint, allowing the treated half of the concrete to return to its original condition after cleaning.

## Heavier Application of Graffiti:



**Before:**



**After:**